

QUALITY & SERVICE  
MAKE THE "DIFF"

# Pneumatic Hi-Lo Series 62A

## Instruction Manual

### Pneumatic Hi-Lo

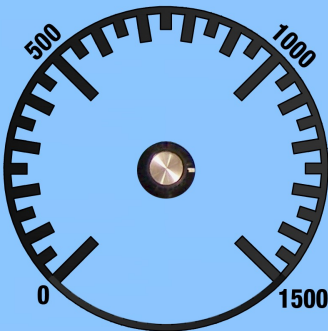
OUT PSI Supply



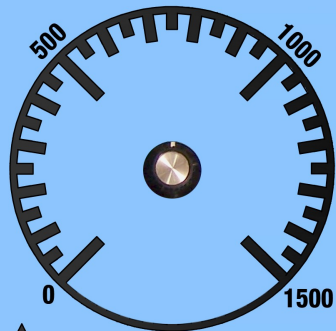
IN PSI Supply



[www.coughlinequipment.com](http://www.coughlinequipment.com)  
405-350-0022



Hi Set



Lo Set



↑  
Reset

# Table of Contents

Description.....	1
Calibration .....	1
The Controller .....	2
Technical Specifications .....	4
Schematic.....	5

# **Pneumatic Hi-Lo Instruction Manual**

## **Description**

The Pneumatic Hi-Lo Series 62A controller is designed to close the valve according to high and low limit pressures. The controller has a Hi Set limit and a Lo Set limit. Whenever the process control pressure goes above the Hi Set limit or below the Lo Set limit, the controller will close the valve. The valve will remain shut until the controller is manually reset.

## **Calibration**

1. Remove pressure from PROCESS CONTROL.
2. Turn the Lo Set knob down as far as possible
3. If the controller is not in service, push the reset switch up to put it in service.
4. Turn the Lo Set knob up until you hear the controller click off.
5. Loosen the Lo Set knob screw, adjust it so that the knob points to zero, then tighten the screw.
6. Apply a known pressure. (500 psi is recommended)
7. Turn the Hi Set knob up as far as possible
8. If the controller is not in service, push the reset switch up to put it in service.
9. Turn the Hi Set knob down until you hear the controller click off.
10. Loosen the Hi Set knob screw, adjust it so that the knob points to the known pressure, then tighten the screw.
11. Test both the Hi Set and Lo Set at other pressures. If the pressure does not track accurately, there is a physical problem with the controller.

Pneuma

OUT PSI Supply

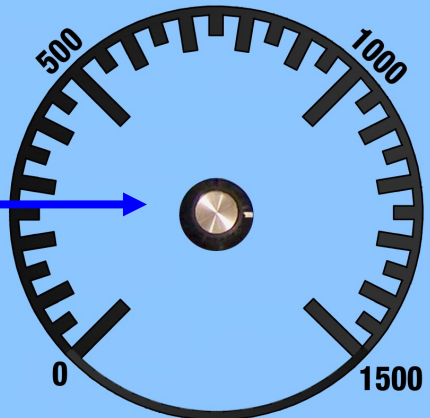


**OUT PSI Supply:** This gauge shows the pressure being sent out of the controller on the OUT PSI SUPPLY connection.



www.coughlin  
405-35

**Hi Set:** Turn this knob to adjust the high set point, above which the valve will be closed.



Hi Set

**NOTE:** Hi Set will always be above Lo Set. When increasing the settings, you should adjust Hi Set first, then Lo Set. When decreasing the settings, you should adjust Lo Set first, then Hi Set.

# Electric Hi-Lo

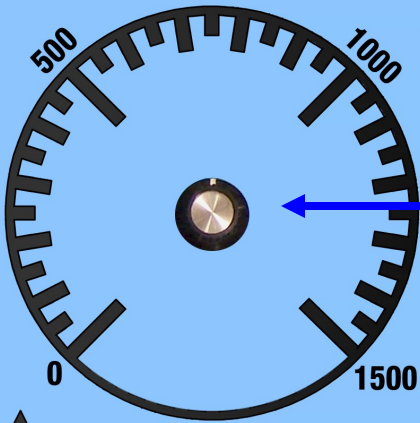


equipment.com  
60-0022

**IN PSI Supply**



**IN PSI Supply:** This gauge shows the pressure coming into the controller on the IN PSI SUPPLY connection.



**Lo Set:** Turn this knob to adjust the low set point, below which the valve will be closed.



**Reset**

**Lo Set**

**Reset:** To put the controller in service, push the reset switch UP, and hold it until the motor valve is open.  
  
To take the controller out of service, push the reset switch DOWN.

# Pneumatic Hi-Lo Instruction Manual

## Technical Specifications

### **PRESSURE**

Max In PSI Supply: 200 psi

Max Process Control: 1500 psi

### **GAUGES**

OUT PSI Supply: 0-200 psi

IN PSI Supply: 0-200 psi

### **LIMITS**

Hi Set: 0-1500 psi

Lo Set: 0-1500 psi

### **WEIGHT**

14.1 lbs.

### **ENCLOSURE**

Weatherproof Painted Steel Enclosure

UL Types 12 & 13

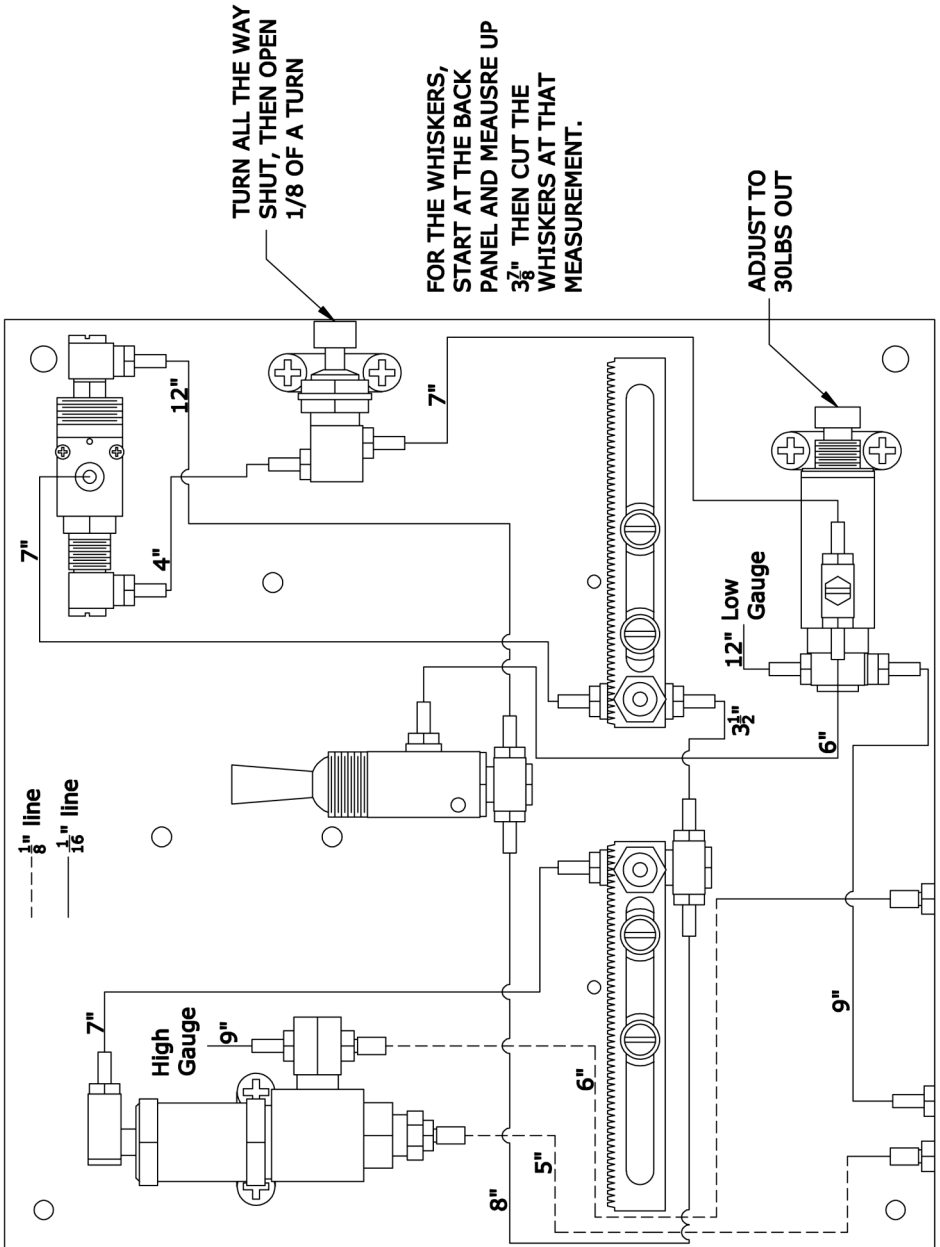
CSA Type 12

NEMA Types 12 & 13

Dimensions: 10" H x 10" W x 6" D

# Pneumatic Hi-Lo Instruction Manual

## Schematic





**QUALITY & SERVICE  
MAKE THE "DIFF"**

Electronic Design for Industry  
100 Ayers Blvd., Belpre, OH 45714  
(740) 401-4000  
[www.ediplungerlift.com](http://www.ediplungerlift.com)

*Copyright © 2010 by Electronic Design for Industry  
Updated 2011-01-10*